

EVOLUTION™ 6121 HARD HAT

STANDARD & SHORT BRIM - SLIP RATCHET

TECHNICAL SPECIFICATION

HEAD PROTECTION

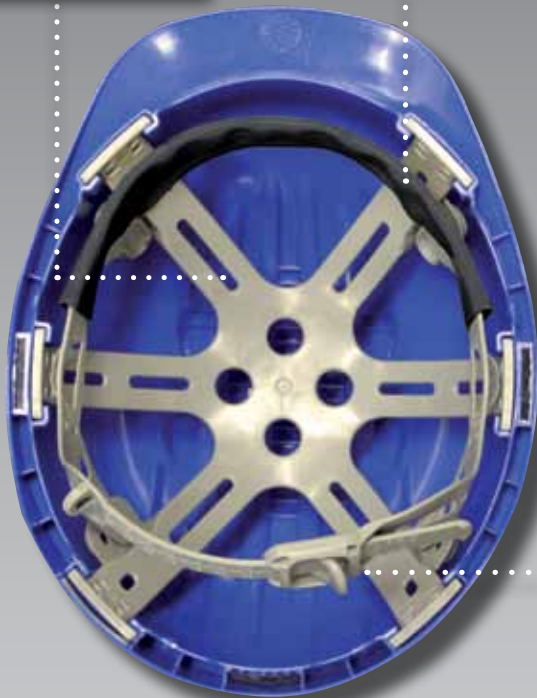
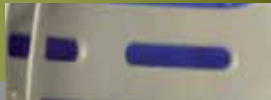
INSTRUCTIONS FOR USE

Fit hard hat on head and ensure the hard hat is adjusted to the size of the user's head. Fasten chin strap (if available) to ensure fit. The harness depth can also be adjusted on this helmet using the unique "3D Adjustment" setting for a precise fit.

SHELL:
High Density
Polyethylene (HDPE)

SWEATBAND:
Black Brushed Nylon

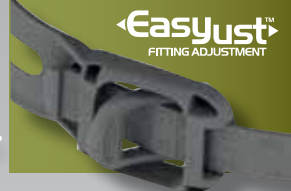
SUSPENSION:
HDPE Strap & Clips with
Polyethylene Straps



SLIP RATCHET:

EasyJust™ Slip Ratchet version of the EVO6121 Full Brim is so simple to fit that it can be adjusted with just one finger

Easyjust™
FITTING ADJUSTMENT



CLEANING & MAINTENANCE

The shell may be cleaned with soap and warm water and dried with a soft cloth

The hard hat should not be cleaned with chemical or abrasive cleaners

The hard hat should be stored out of direct sunlight

The hard hat should be stored away from chemicals and extremes of temperature

CONFORMITY & TECH DATA

Conforms to ANSI/ISEA Z89.1-2009, Type I Class E

Slip Ratchet for wide size range adjustment - High comfort fit

Suspension can be removed and refitted for reverse wearing

Standard & Short Brim options

Custom imprinting is available

COO/Harm Code: UAE / 6506.10.6075

EVOLUTION™ 6121 HARD HAT

STANDARD & SHORT BRIM - SLIP RATCHET

TECHNICAL SPECIFICATION

HEAD PROTECTION

DIMENSIONS OF OUTER PACKAGING

Quantity: 20

Weight: 16.75 lbs. (Approx.)



HEIGHT:
18"

LENGTH:
23"

WIDTH:
19"

DIMENSIONS OF HARD HAT

Hat Size: 6 7/8 - 8 (20 7/8" - 25")

Weight: 13.2 oz (Approx.)

HARD HAT FEATURES

STANDARDS	ANSI/ISEA Z89.1 - 2009, Type I Class E	Yes
PERFORMANCE	Impact Resistance Reverse Donning Electrical Insulation	Yes 54 Joules Yes Yes: Class E 20,000V
SHELL MATERIAL	HDPE Recyclable	Yes Yes
SUSPENSION MATERIAL	HDPE Clips HDPE Straps	Yes Yes
OPTIONS	Universal Accesories Reflective CR2 option	Yes Yes
SUSPENSION SYSTEM OPTIONS	JSP 3D Slip Ratchet 6-Point	Yes Yes Yes
CHINSTRAP	4 pts 2 pts	Yes Yes
LOGO OPTIONS	Front, Rear, Side MOQ Logo	Yes 20

ITEM #	COLOR	BRIM	SHELL	UPC - EACH	UPC - CASE	CASE QTY
280-EV6121-10	White	Standard	Non-Vented	5038428136556	5038428811774	20
280-EV6121-20	Yellow	Standard	Non-Vented	5038428136563	5038428811781	20
280-EV6121-30	Green	Standard	Non-Vented	5038428136570	5038428811798	20
280-EV6121-39	Pink	Standard	Non-Vented	5038428143653	5038428812368	20
280-EV6121-50	Blue	Standard	Non-Vented	5038428136587	5038428811804	20
280-EV6121-60	Red	Standard	Non-Vented	5038428136594	5038428811811	20
280-EV6121-80	Orange	Standard	Non-Vented	5038428136600	5038428811828	20
280-EV6121-LY	Bright Lime/Green	Standard	Non-Vented	5038428136624	5038428811842	20
280-EV6121-OR	Bright Orange	Standard	Non-Vented	5038428136617	5038428811835	20
280-EV6121S-10	White	Short	Non-Vented	5038428136839	5038428812054	20
280-EV6121S-20	Yellow	Short	Non-Vented	5038428136846	5038428812061	20

LIMITATIONS OF USE: Protection will only be offered if the hard hat is fitted correctly. Any hard hat subjected to severe impact should be replaced immediately. Do not apply paint, solvents or adhesive labels except in accordance with instructions from the manufacturer. The suspension, when in contact with the skin may cause allergic reactions to susceptible individuals. If this occurs leave the hazard area, remove the helmet and seek medical advice. The attention of users is also drawn to the dangers of modifying or removing any of the original component parts, other than as recommended by the manufacturer.